



Stoneacre
Properties



Chadwick Street

Leeds, LS10 1PJ

£185,000



Chadwick Street

Leeds, LS10 1PJ

£185,000



Entrance

Communal entrance with intercom entry system. Lift leads up to the first floor. Entering the apartment you are welcomed into a spacious entrance hallway which offers access throughout the property.

Kitchen/Living Room

Wonderfully presented living space with a dedicated sitting area, space for a dining table and a fitted kitchen complete with integrated oven, electric hob with extractor above, microwave, dishwasher, washing machine, and fridge/freezer. Access offered out to the balcony.

Bedroom 1

Large double bedroom with ample space for bedroom furniture. En-suite bathroom.

En-suite

Complete with shower, toilet and sink.

Bedroom 2

Second double bedroom with space for wardrobes.

Bathroom

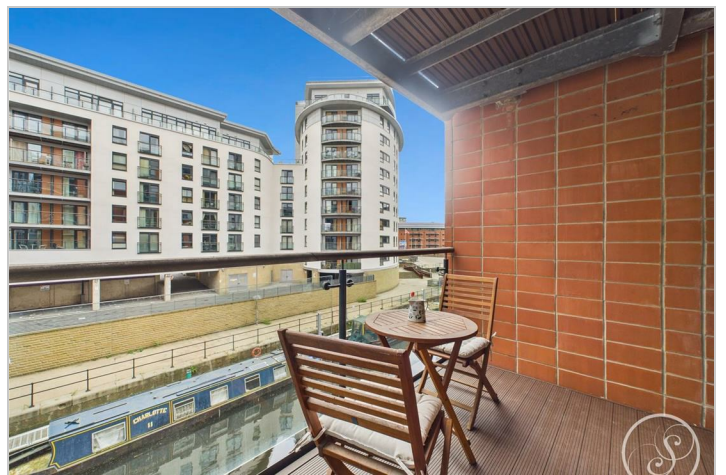
Shower over bath, toilet and sink.

Balcony

Private and overlooking the dock.

Lease

We are advised the property is leasehold with 127 years remaining. The current service charge is £3,606.08 (includes water bill) and the ground rent is £250 per annum. A buyer is advised to obtain verification from their solicitor or legal advisor.



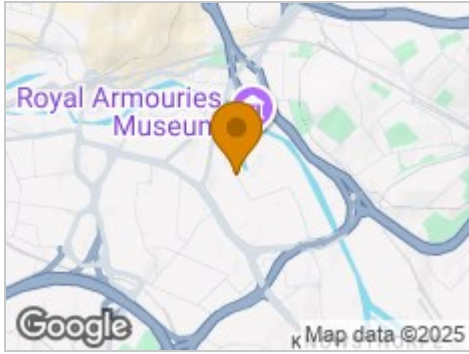
Road Map



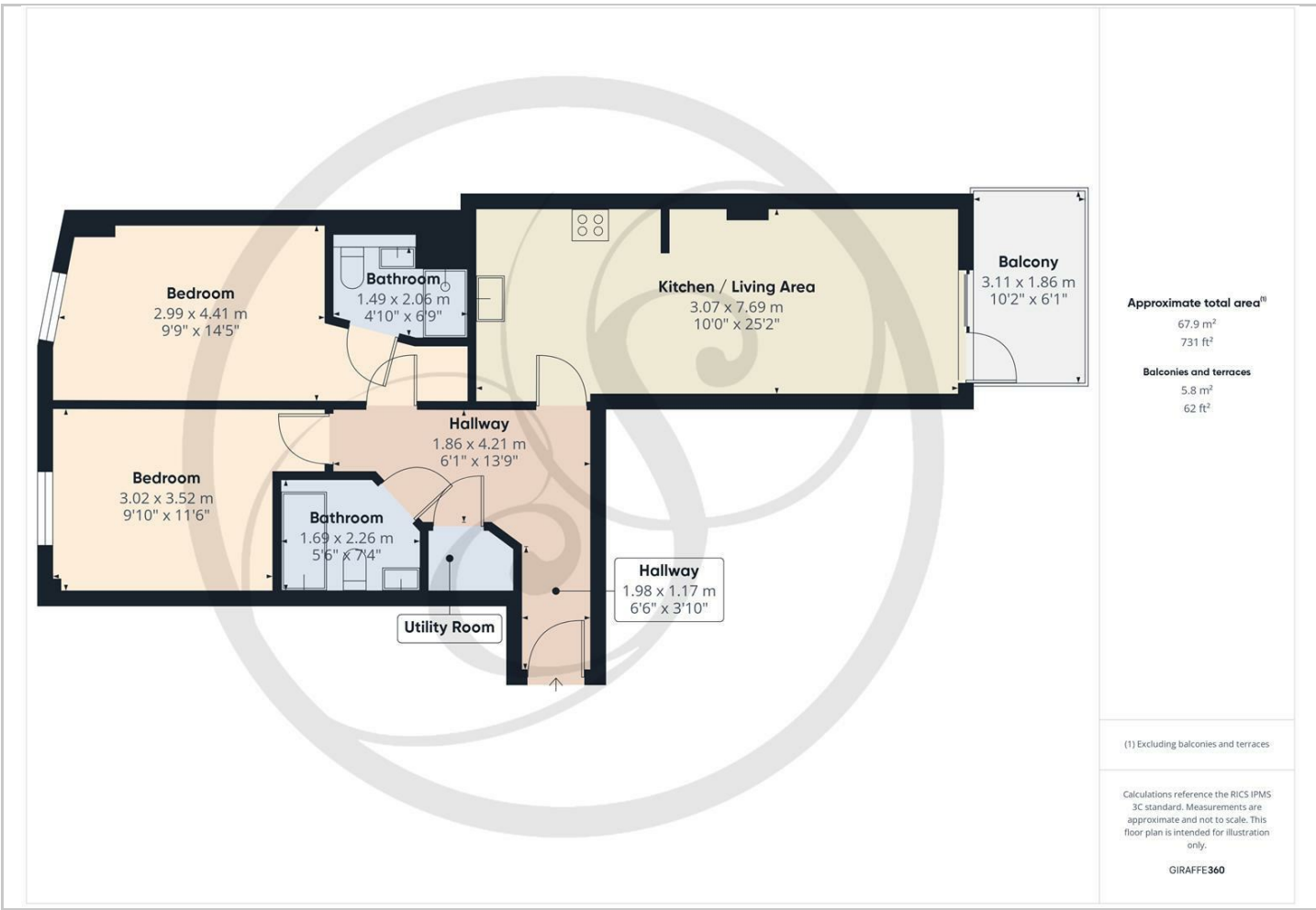
Hybrid Map



Terrain Map



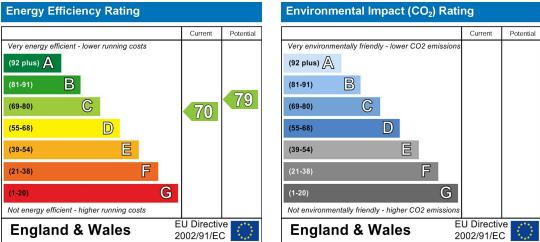
Floor Plan



Viewing

Please contact our Chapel Allerton Sales Office on 0113 237 0999 if you wish to arrange a viewing appointment for this property or require further information.

Energy Efficiency Graph



These particulars, whilst believed to be accurate are set out as a general outline only for guidance and do not constitute any part of an offer or contract. Intending purchasers should not rely on them as statements of representation of fact, but must satisfy themselves by inspection or otherwise as to their accuracy. No person in this firms employment has the authority to make or give any representation or warranty in respect of the property.